

AutoScan-DS-EX Pro(H)

Advanced Desktop Scanner

SHINING 3D
DENTAL

AutoScan-DS-EX Pro(H), developed and manufactured by Shining 3D, is a 3D dental scanner with powerful functions for multiple applications covering scans of impressions, plaster models, articulators, implant abutments, etc. Its high-resolution cameras, advanced algorithms, and user-friendly interface bring you with superior data quality with optimal experience.

FLEXIBLE WORKFLOW

Set up your own workflow as you prefer, increasing work efficiency like never before. All-in-one and triple tray are available to get complete scan data with less steps.

BACKSTAGE DATA PROCESSING

Scan and backstage data processing can be carried out simultaneously, making the whole process more efficient.

VERSATILE SCAN MODES

The new software associated with AutoScan-DS-EX Pro(H) can support versatile scan modes, including Multi Path Scan, High Quality Scan, AI Scan, Texture Scan, HDR Mode Scan, Reduce Brightness Scan, etc.



SCAN FOR MORE
INFORMATION:



Ultra-high Accuracy

Scan accuracy $\leq 8 \mu\text{m}$ assures reliable scan results, satisfying the requirements of various applications within the dental industry.



Unparalleled Details

Equipped with dual 5.0 MP high resolution cameras, the AutoScan-DS-EX Pro(H) can capture every detail of the scanned components meticulously.



Fast Speed

Bite scan: 7s
Upper/Lower jaw scan: 14s
1~4 dies scan: 18s
5~8 dies scan: 30s
Impression scan: 66s

www.shining3ddental.com

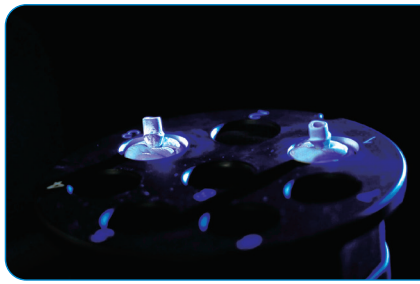
sales@shining3d.com

Copyright © 2014-2023 SHINING 3D. All Rights Reserved.

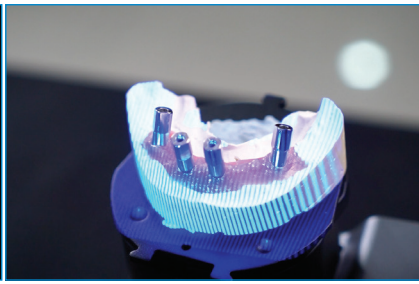


dhpsupply.com | 800.626.2163

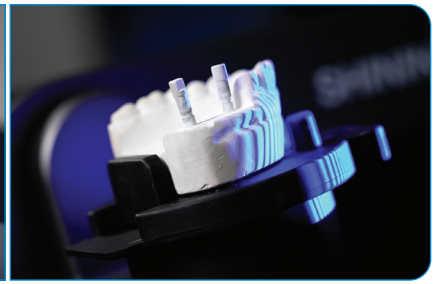
Applications



Implant Abutment



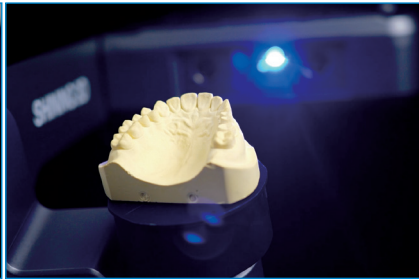
Implant Bridge



Scanbody



Texture



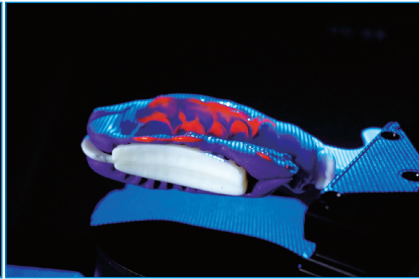
Model



Articulator



Full Denture



Impression



Post and Cure

Technical Specifications AutoScan-DS-EX Pro(H)

Camera Resolution	2x5.0 MP
Accuracy	< 8 μm
Scanning Time	7s for bite scan; 14s for upper/lower jaw scan; 18s for 1-4 dies scan; 30s for 5-8 dies scan; 66s for impression scan.
Articulator Scan	Support articulator transfer
Output Format	STL, OBJ, PLY
Light Source	Blue Light
Dimensions	385 x 260 x 270 mm
Weight	5 kg
Interface	USB 3.0
Power Supply	DC 24 V

